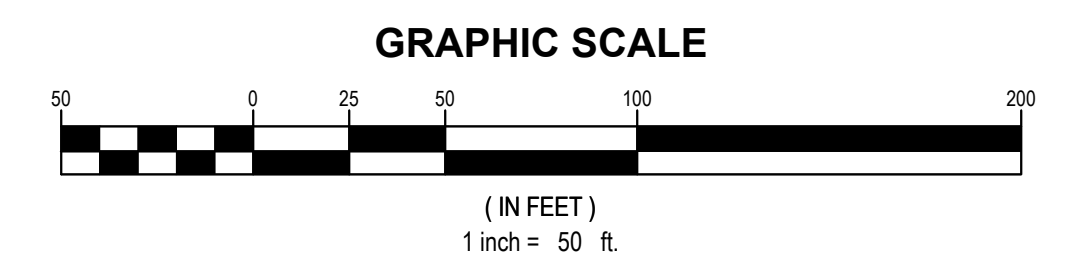
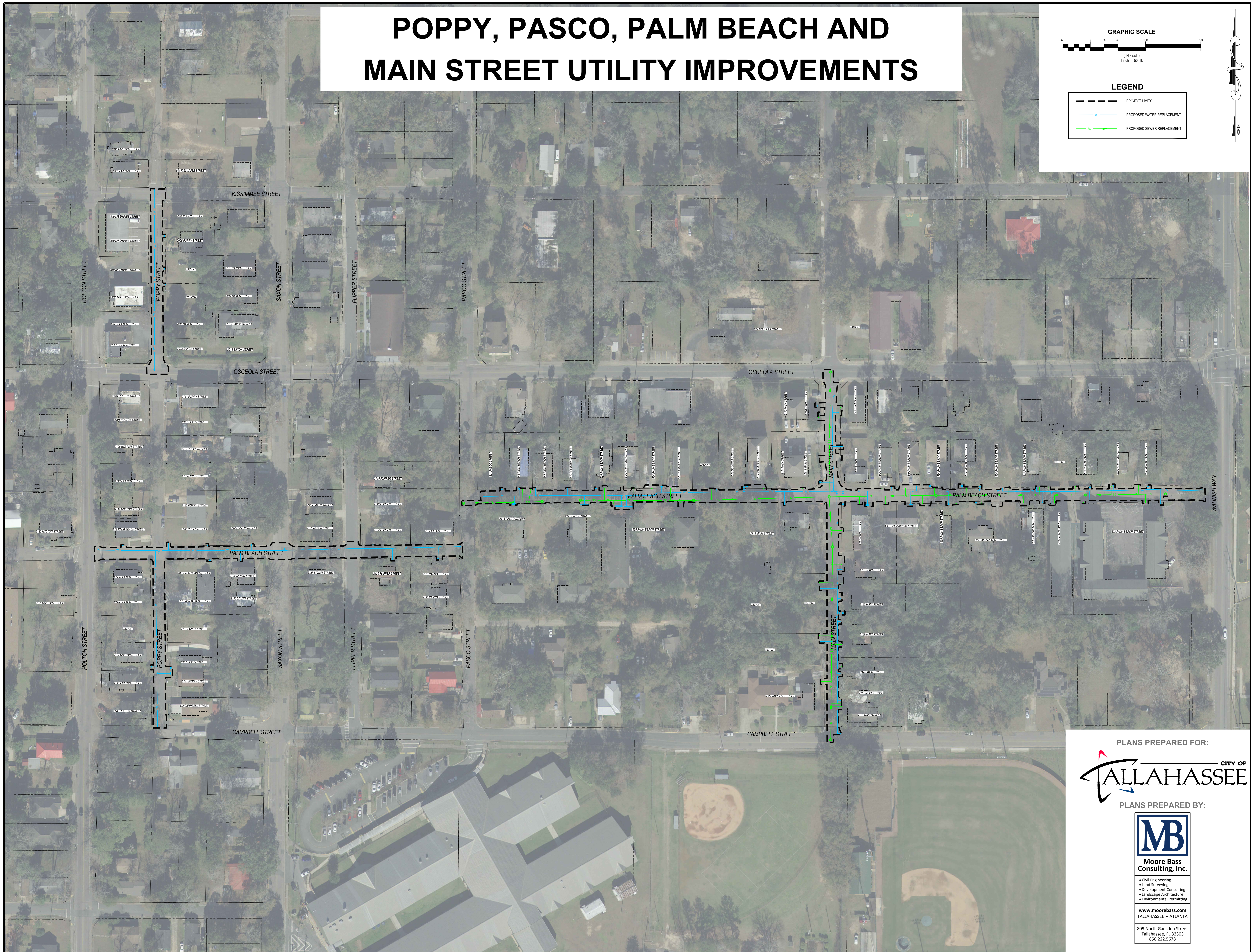


POPPY, PASCO, PALM BEACH AND MAIN STREET UTILITY IMPROVEMENTS



LEGEND

- PROJECT LIMITS
- PROPOSED WATER REPLACEMENT
- PROPOSED SEWER REPLACEMENT



PLANS PREPARED FOR:



PLANS PREPARED BY:



Moore Bass Consulting, Inc.

- Civil Engineering
- Land Surveying
- Development Consulting
- Landscape Architecture
- Environmental Permitting

www.moorebass.com

TALLAHASSEE • ATLANTA

805 North Gadsden Street
Tallahassee, FL 32303
850.222.5678